

ABBVIE | ABBVIE MEDICINES | 3D-ONE | 4WEB MEDICAL | ACHMEA | ACTIVEVIEW CONNECT GROEP | ADD2X
BIOSCIENCES | AEON ASTRON EUROPE | AIRBUS DEFENCE AND SPACE NETHERLANDS | ALRIJNE
DIEKENHUIS | AMARNA THERAPEUTICS | AN VALUATIONS | APOTEX NEDERLAND | APPLIED RADAR
TECHNOLOGY | ASTP | ASTELLAS PHARMA EUROPE | AVERY DENNISON | BABYBLOOM HEALTHCARE
BALANS LABORATORIUM LEIDEN | BASECLEAR | BATAVIA BIOSCIENCES | BIOFOCUS | BIOMARIN
NEDERLAND | BIOMIMIQ | BIOPARTNER CENTER LEIDEN | BIOSPARQ | BIOTOP MEDICAL | BIRD
RECRUITMENT | BISLIFE FOUNDATION | BOERHAAVE NASCHOLING | BRUKER | BUCHEM | CAM
BIOCERAMICS | CATEXEL | CELL SIGNALING TECHNOLOGY EUROPE | CENTRE FOR HUMAN DRUG
RESEARCH | CHILTERN INTERNATIONAL | CHIRALVISION | CLINICAL REACH DRUG DEVELOPMENT |
CLINICAL SCIENCE SYSTEMS | COMPAAAN DESIGN | CONDI FOOD | CORPUS EXPERIENCE | COSINE
CRUCCELL | CSC | CULGI | CURARATA | CURIUM | CWTS | DARWIN DIGITS | DCPRIME | DE STAL
DELTA CRYSTALLON | DELTAPATENTS | DIANOVA | DRIEHOEK RESEARCH SUPPORT | DUPONT
INDUSTRIAL BIOSCIENCES | EBMT CLINICAL TRIALS & STUDY OFFICE | EXPLANT TECHNOLOGIES
FACIO THERAPIES | FIBRIANT | FITLAND XL LEIDEN | FLEXMERS | FORUM PHARMACEUTICALS
FYTAGORAS | GALAPAGOS | GENERADE | GGZ LEIDEN RIVIERDUINEN | GIMARIS | GIOTTO
MANAGEMENT CONSULTANTS | GLOBAL TECHNICS | GOOD BIOMARKER SCIENCES | GOUTIER
LABORATORIES | HAL ALLERGY | HALIX | HAMPSHIRE HOTEL FITLAND LEIDEN | HARBOUR FIELDS |
HELPLINE | HILTON GARDEN INN | HOGESCHOOL LEIDEN | HOOGHEEMRAADSCHAP VAN RIJNLAND |
HUIJSMIJ | IDRIS SOLUTIONS | IEMO | IN OVO | INNOSER LABORATORIES | ISA PHARMACEUTICALS
JANSSEN BIOLOGICS | KARBOR SERVICES | KENNISCENTRUM LEIDEN | LABOLUTIONS | LAP&P |
LEIDEN ACADEMIC CENTRE FOR DRUG RESEARCH (LACDR) | LEIDEN BIO SCIENCE PARK FOUNDATION



**LEIDEN
BIO SCIENCE
PARK**



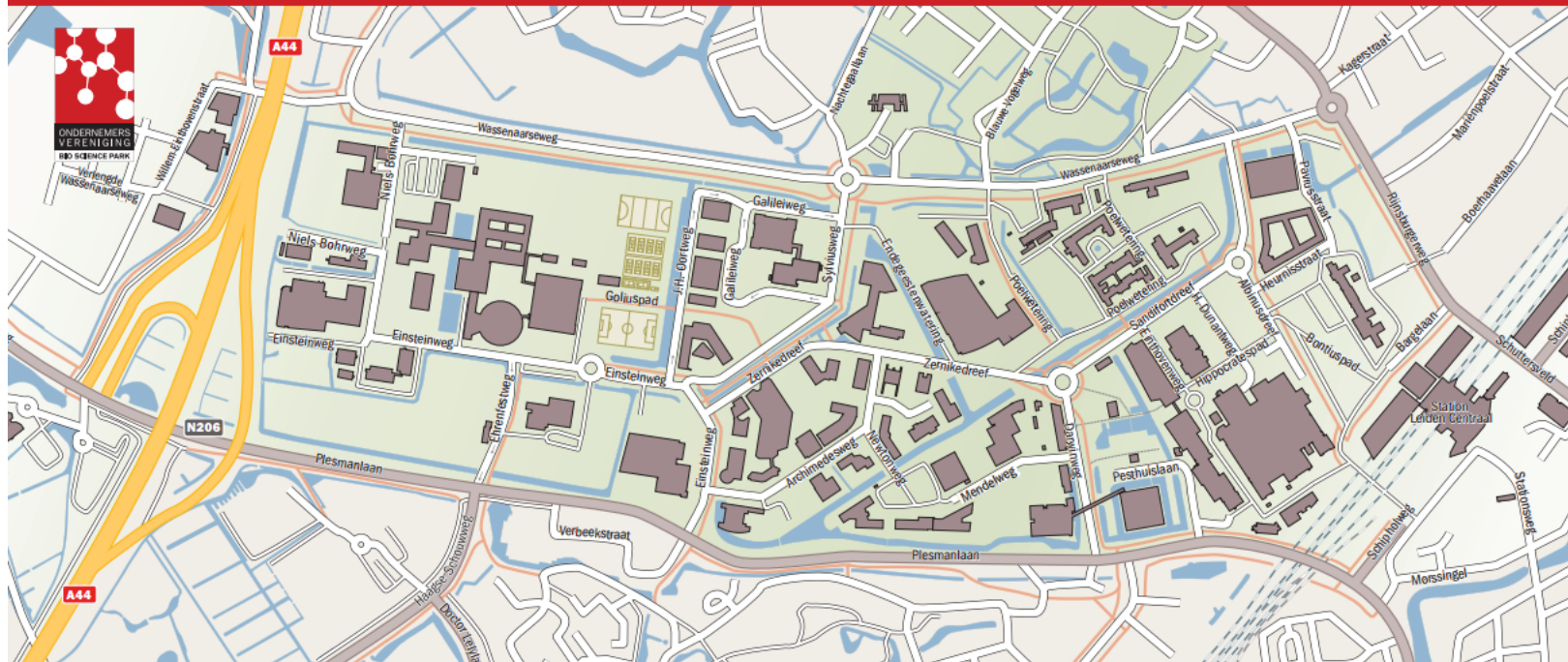
WHY HOLLAND?

- ◉ World Class Life Sciences and Technology cluster
 - 3 Life science Universities, Delft university of technology (#5 engineering school in Europe)
- ◉ Excellent Environment for clinical studies:
 - LUMC Erasmus MC, Center for Human drug research

WHY LEIDEN?

- 110 hectares of land (30 years ago)
- Leiden University: 440 years in 2015, 16 Nobel laureates studied and worked here

LEIDEN BIO SCIENCE PARK

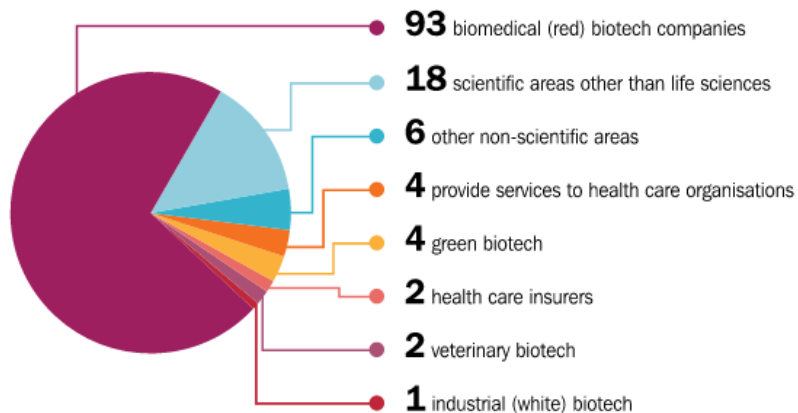


BIOPARK TODAY



LEIDEN
BIO SCIENCE
PARK

130 companies of which:



93 biomedical (red) biotech companies, of which:

- 20 drug development companies
- 10 medtech companies
- 22 providing business services dedicated to drug development
- 41 companies that provide drug development services



16.900

people are employed
at Leiden Bio
Science Park



PERMANENT RESIDENTS:

Biomedical companies at Leiden Bio Science Park

2-BBB MEDICINES | 4WEB MEDICAL | AEON ASTRON EUROPE
AMARNA THERAPEUTICS | APOTEX | APPLIED RADAR TECHNOLOGY
ASTELLAS PHARMA EUROPE | AVERY DENNISON
BABYBLOOM HEALTHCARE | BIOMARIN | BIOSPARQ
BRUKER | CAM BIOCERAMICS | CRUCCELL | DCPRIME
DELTA CRYSTALLON | FACIO THERAPIES | FIBRIANT
FORUM PHARMACEUTICALS | GALAPAGOS | HAL ALLERGY
ISA PHARMACEUTICALS | JANSSEN BIOLOGICS
MENTOR MEDICAL SYSTEMS | MYMETICS | PHARMING | PROQR
THE MEDICINES COMPANY | TLC BIOPHARMACEUTICALS
WELCH ALLYN

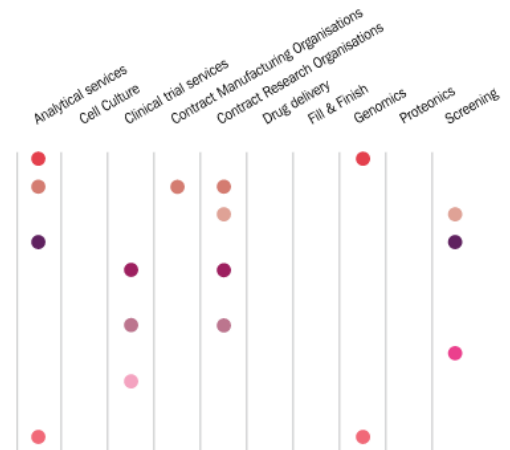
● 20 Drug development companies ● 10 Medtech companies

- ◎ **The Leiden area is a booming knowledge region. It is home to the Leiden University, the Leiden Bio Science Park, the aerospace cluster and the floral industry. Apart from offering challenging jobs, the Leiden region is an excellent location for living and recreation.**

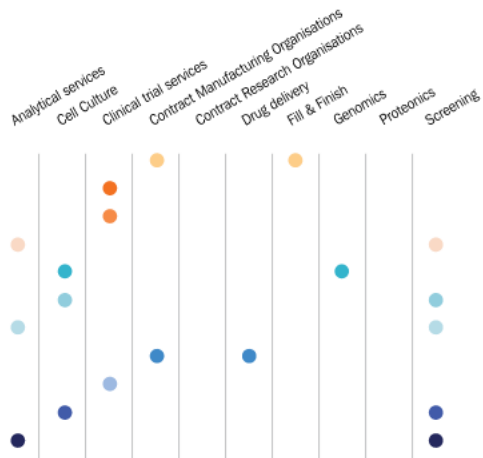


Services
throughout
the (bio)
pharma-
ceutical
value chain

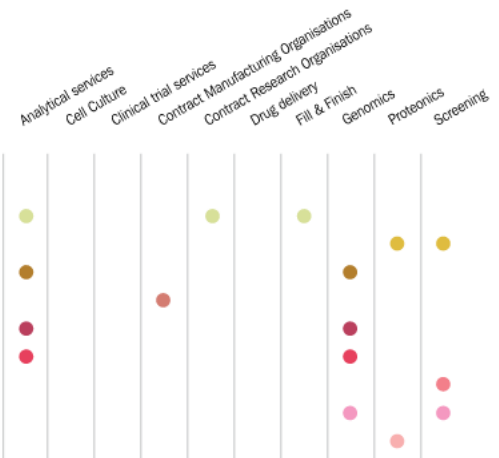
- BaseClear
- Batavia Biosciences
- Biofocus
- Biomimiq
- Centre for Human Drug Research
- Chiltern International
- ChiralVision
- Clinical Reach Drug Development
- FlexMers



- HALIX
- InnoSer Laboratories
- LUMC
- MicroSafe Laboratories
- Miltenyi Biotec
- Mimetas
- Ocello
- OctoPlus
- OmniComm Promasys
- Pluriomics
- ProBase Pharma



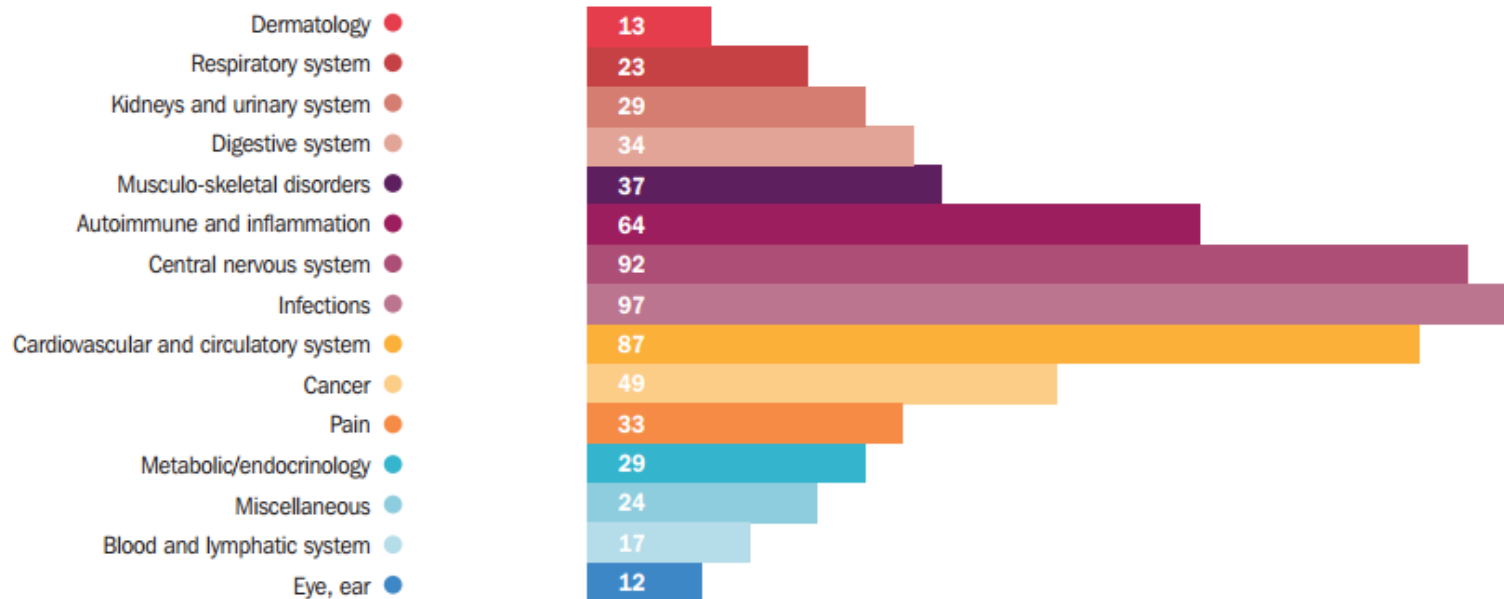
- Protein Labelling
- Innovation Technologies
- PROXY Laboratories
- QuickZyme Biosciences
- ServiceXS
- Thermo Fisher Scientific
- Toxys
- Verilabs Nederland
- ZF-pharma
- ZF-screens
- ZoBio



R&D PIPELINE

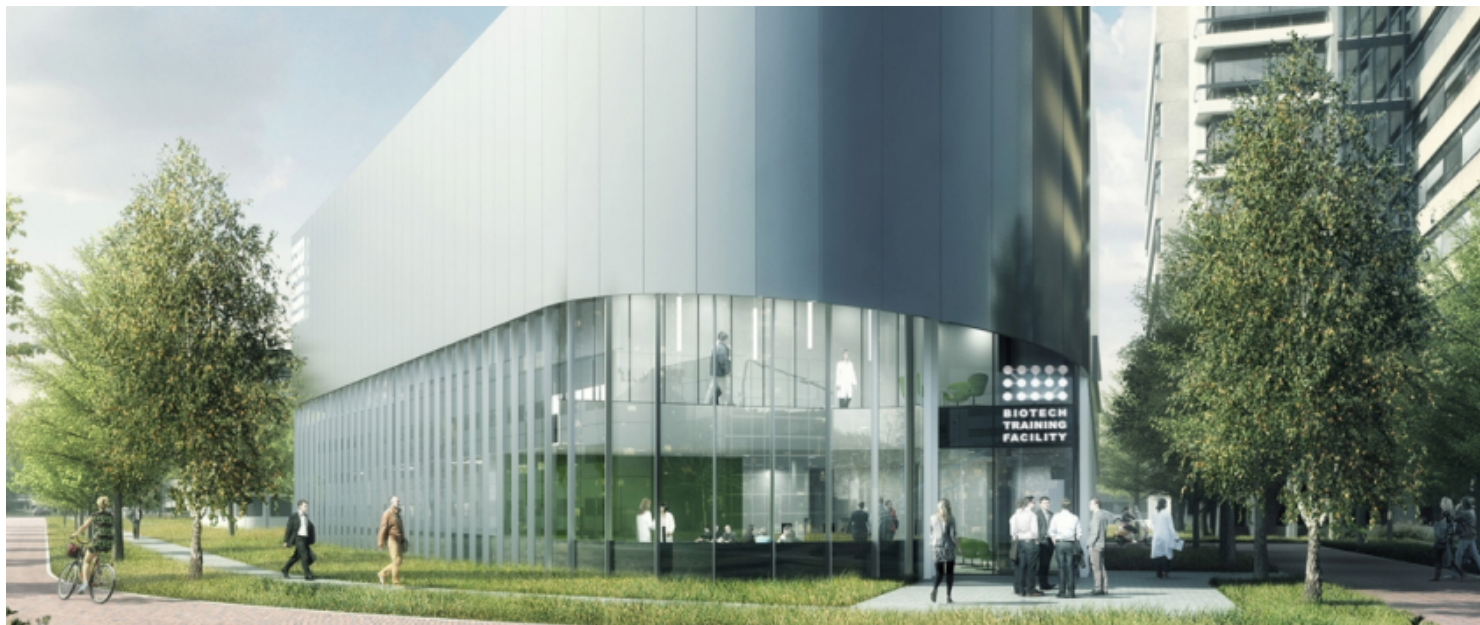


LEIDEN
BIO SCIENCE
PARK



BIOTECH TRAINING FACILITY

- Launched Jan. 2016
- 25 “standard” courses: GMP, Asceptic techniques, DOE, QBD
- Customized courses
- funded from the European Regional Development Fund of the European Commission



FIVE REASONS TO ESTABLISH YOUR COMPANY LEIDEN BIO SCIENCE PARK



LEIDEN
BIO SCIENCE
PARK

- ◉ Availability of **labs and office space**, for start-ups as well as established businesses
- ◉ Strong **R&D collaboration** between academia and industry
- ◉ Accessible state-of-the-art **research facilities**
- ◉ A vibrant international **community** with lots of interaction and meetings
- ◉ A highly educated life sciences **labor force**

HUBSPOT FOR BEGINNERS



LEIDEN
BIO SCIENCE
PARK



Leiden



Universiteit
Leiden
The Netherlands



EVENEMENT

Officiële opening HUBspot
op 31 oktober

[Naar evenement >](#)



AEROSPACE STARTUP



LEIDEN
BIO SCIENCE
PARK

Stellar Space Industries is an engineering startup with a focus on Aerospace that is founded in April 2015.

- We are currently in the closing stage of developing a partnership with the Leidse Instrumentmakers School, which will be our first production facility of space technology. By developing a production capability for the fabrication of space technology and providing engineering services for the high-tech industry, we can finance our research into the technological black holes that we encounter. Currently Stellar Space Industries has a project that leads to a decrease in fuel consumption of launch vehicles and therefore reduce costs and emission of space operations significantly.

GARDENS ON MARS



LEIDEN
BIO SCIENCE
PARK



- ◉ MIT organized the world's biggest competition in synthetic biology: the international Genetically Engineered Machine (iGEM) competition.
- ◉ total, over 300 teams are participating

LATEST NEWS

Q2 2016

De Stal will reopen in their new facilities with a larger kitchen, storage and a large south facing terrace.



September 2016

At the **Beta Campus**, the new Faculty of Science building of Leiden University, phase I will open.



Q3 2018

Naturalis: opening of the enlarged and reorganised museum with T-rex and extra space for collections and researchers.

