

Solutions for business and public sector

SECURE DESIGNED SOFTWARE SOLUTIONS

Our mission

We strive to create value for our customers, providing comprehensive and integrated business management system with proven and reliable technologies.

Promote the welfare of clients and provide them opportunities for implementation of business initiatives.

Our goal

To become the leading supplier of comprehensive and powerful business management solutions for the unique needs of each customer in Russia and abroad.



"Teleform IS" Moscow,
Str. Letnikovskaya, 11/10 building 1
+7 (495) 783 2056, (499) 922 4214



About US

Activity

- Founded in 1991
- More than 550 employees
- Based in biggest cities of Central and Povolzhye regions of

Russia:

- Moscow
- Nizhny Novgorod
- Vladimir
- Kazan

Specialization

- Banking
- Science and Industry
- Government sector
- Nuclear power engineering
- Telecommunications
- License of the Federal Security Service

Loyal partners & Clients



ORACLE®

Microsoft®

SYBASE®

IBM®



About company

Certifications

- international quality management system certificate
ISO 9001-2011 (ISO 9001: 2008)
- international quality management system certificate
ISO 9001: 2008, DQS, IQNet

Certified specializations

- works to development and production of protective equipment
confidential information.
- activities for technical protection of confidential information.
- execution of works related to the creation of information security





Products

Performance management system



BI·Sphere
Business Intelligence



«BI-Sphere». Description of system

Solution of problems of control, analysis and assessment of the major financial and operational performance of activity necessary for adoption of administrative decisions

Purposes and appointments

- Strategic management of the organization
- Monitoring and complex analysis of activity
- Providing the analytical reporting
- Assessment of efficiency of business processes and employees

Technologies and products

- Pentaho BI (business analytics platform)
- PostgreSQL (DBMS)
- JAVA (programming language)
- GlassFish (application server)
- ASTRA LINUX (the domestic protected OS)

Advantages

- Integration into IT landscape of any enterprise or organization.
- Use of system in a cloud, without own expenses of the enterprise
- Flexible control for requirements of the specific Customer

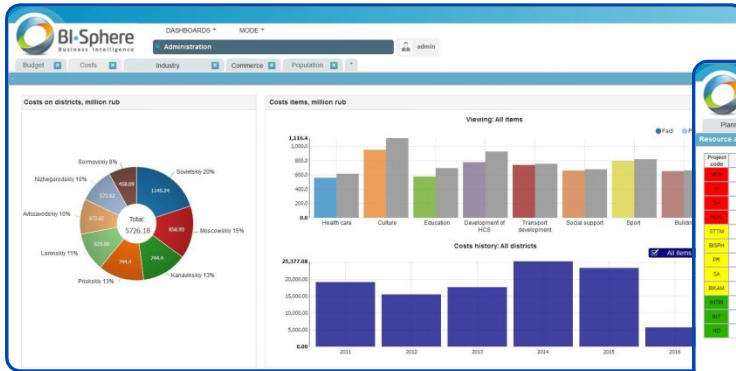
Functional capabilities

- Interactive visualization of indicators of activity on information panels
- The warning system about risks and adverse events, quality control of business processes, SLA, specification (drilldown) and identification of the reasons of possible risks
- Implementation of the model of goal-setting, creating a tree of objectives at all levels of management, monitoring of performance and updating purposes, the establishment of the responsibility matrix
- Formation of system of an assessment of efficiency and motivation of employees
- Creation of the Corporate Date Storage (CDS):
 - Integration with other automated systems of an IT- landscape of the Customer for the purpose of data acquisition, necessary for the analysis and assessment of activity
 - Possibility of import of data of any digital structured format from any systems (DB) and file resources, realization of a possibility of manual input
- Formation and the analysis of the constructed model of data, the multidimensional (OLAP) analysis
- Formation of any reporting on results of activities for data of CDS.

«BI-Sphere». Experience of introduction on large production

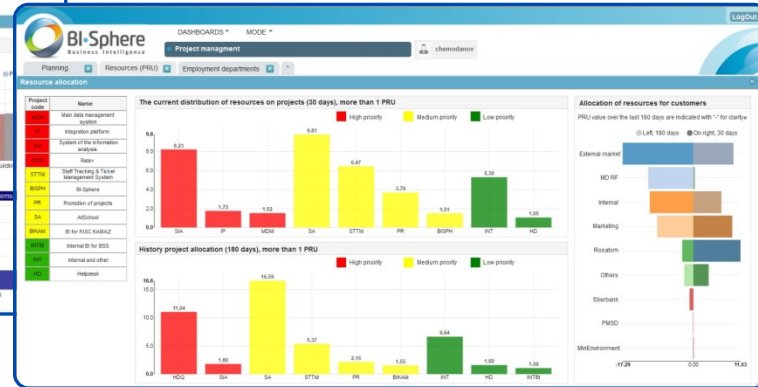
About the project of introduction

- Project duration– 1,5 years
- Covers the following areas of activity: purchasing, finance, economy, planning, investment, accounting, production
- Implemented more than 500 performance indicators and reports to be placed on dashboards



The reached effects

- Improvement of quality and efficiency of processes of monitoring, analysis and assessment of activity
- Minimization of number of administrative mistakes
- Decrease in quantity and average duration of production idle times
- Unification of tools to assess the work of staff and structural units





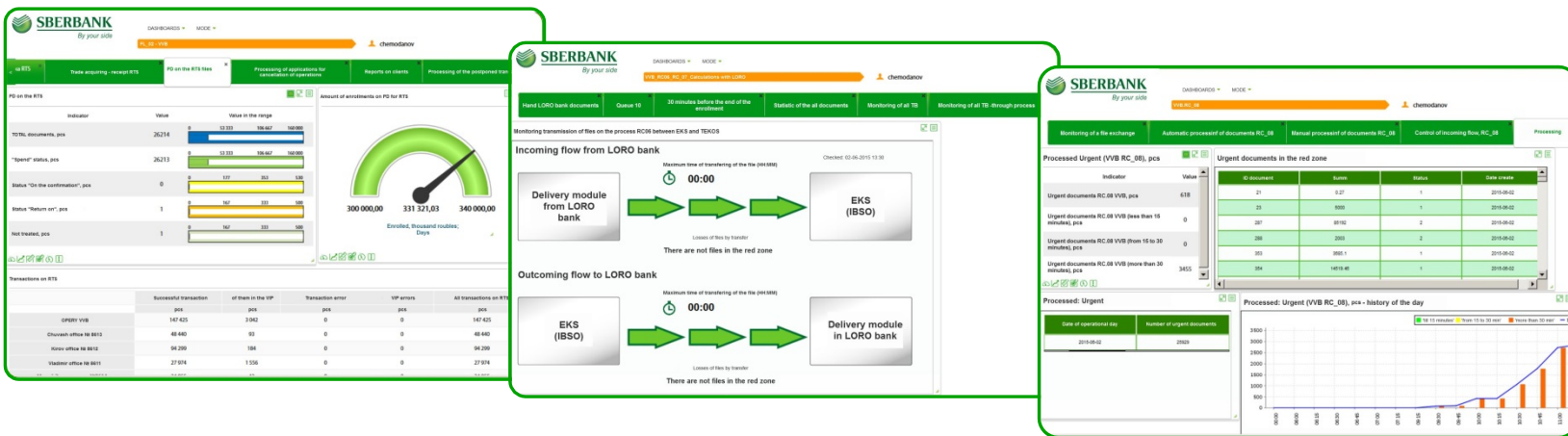
«BI-Sphere». Experience of introduction in the banking sector

About the project of introduction

- Project duration– 1 years
- Covers the following areas of activity of the center: payments to individuals and legal entities, the processing of payments with bank cards, holding of list enrollments and payments of the population
- Implemented more than 700 performance indicators and reports to be placed on dashboards

The reached effects

- Reducing the costs of business process services
- Improving the quality and speed of acceptance of administrative decisions
- Unification of reporting tools and monitoring of business processes
- Reducing the number of critical situations and risks in workflows
- Reducing the number of customer complaints





Products

Project management system



Project Sphere
Project management



«Project-Sphere». Description of system

Increase of efficiency and quality project management in the organization due to use of the unified and automated procedures of management

Purposes and appointments

- Effective management of projects
- Unification of procedures of management
- Use of the automated procedures
- Monitoring at all levels of management
- Increase of quality and validity of the made decisions

Technologies and products

- Vaadin (web-framework), MS Project (management of projects)
- Glassfish (server application), PostgreSQL (CSD)
- Secret Net (certified ISM from unauthorized access)

Advantages

- Integration into IT landscape of any enterprise or organization.
- Use of system in a cloud, without own expenses of the enterprise.
- Flexible control for requirements of the specific customer.

Functional capabilities

- Maintaining structure of a tree of projects
- Work with documents, questions and problems
- Maintaining hierarchical reference books
- Reporting under projects and execution of tasks
- Notices of events and coordination
- Messages between users
- Creation of objects and communications without modification of a program code
- Flexible interface
- Differentiation of access on the basis of role and group accessories of users
- Audit of users actions

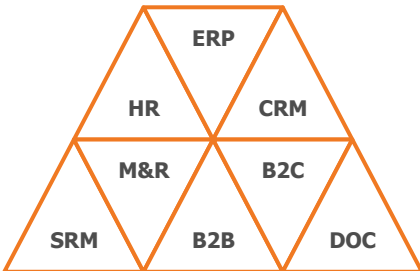


Integration

Project Management Center



Other Sources ...



Data Mart

Data Storage

Operational Data



Web-browser





Integration

Input data of Project-Sphere

- Financial indicators of the project
- Labor input of tasks
- Periods of execution of projects and tasks
- Pool of resources
- Use resources on projects
- Current and plan assignments resources

System of filling of show-windows (ETL)

- Synchronization with Project-Sphere
- Updating of data marts with the given periodicity
- Multistage analysis algorithms and comparisons of historical data
- Modular development of algorithms

Analytical algorithms of BI-Sphere

- Design indicators in terms of business process
- Calculation of financial indicators for projects and tasks
- Calculation of labor costs
- Calculation of risks for periods and conflicts of resources
- Statistical calculation for portfolios of projects
- Calculation of indicators with the given periodicity

Visualization of results

- Ready sets info panel on projects
- Sets of panels of different detail levels
- Ensuring of drill-down technique of search of problem links
- Possibility of placement of different type of charts and diagrams on the info panels
- Create of own info panels from units of visualization



Technologies of open source software

Partnership



Astra Linux SE
Operating systems



Postgre SQL
DBMS



MuleSoft
Application integration



Alfresco
Content management



Apache Tomcat
Java server of applications



Pentaho BI
Business-analytics



OSSIM
Security management



Liferay
Portal Services



PostgreSQL
the world's most advanced open source database

The accumulated technological experience in working with Postgre SQL



Our advantages

Operation with the client

- Analytical services in business processes
- Selection of products
- Scalable decisions
- Support and consultation at all stage of integration of system
- Training of employees

Adaptive solutions

- Studies of unique features of business processes of the client
- Fine tuning of algorithms under features of the client
- Customization of visual representations
- Ensuring functioning on various devices

Individual way of development

- Completion of functionality under requirements of customers
- Realization of nonstandard algorithms
- Realization of corporate interfaces
- Pilot project
- Realization of integration with any system
- Connection of payment portals
- Realization of mobile applications

**Thank you for your
attention!**



"Teleform IS" Moscow,
Str. Letnikovskaya, 11/10 building 1
+7 (495) 783 2056, (499) 922 4214