



National Research

**Tomsk  
State  
University**

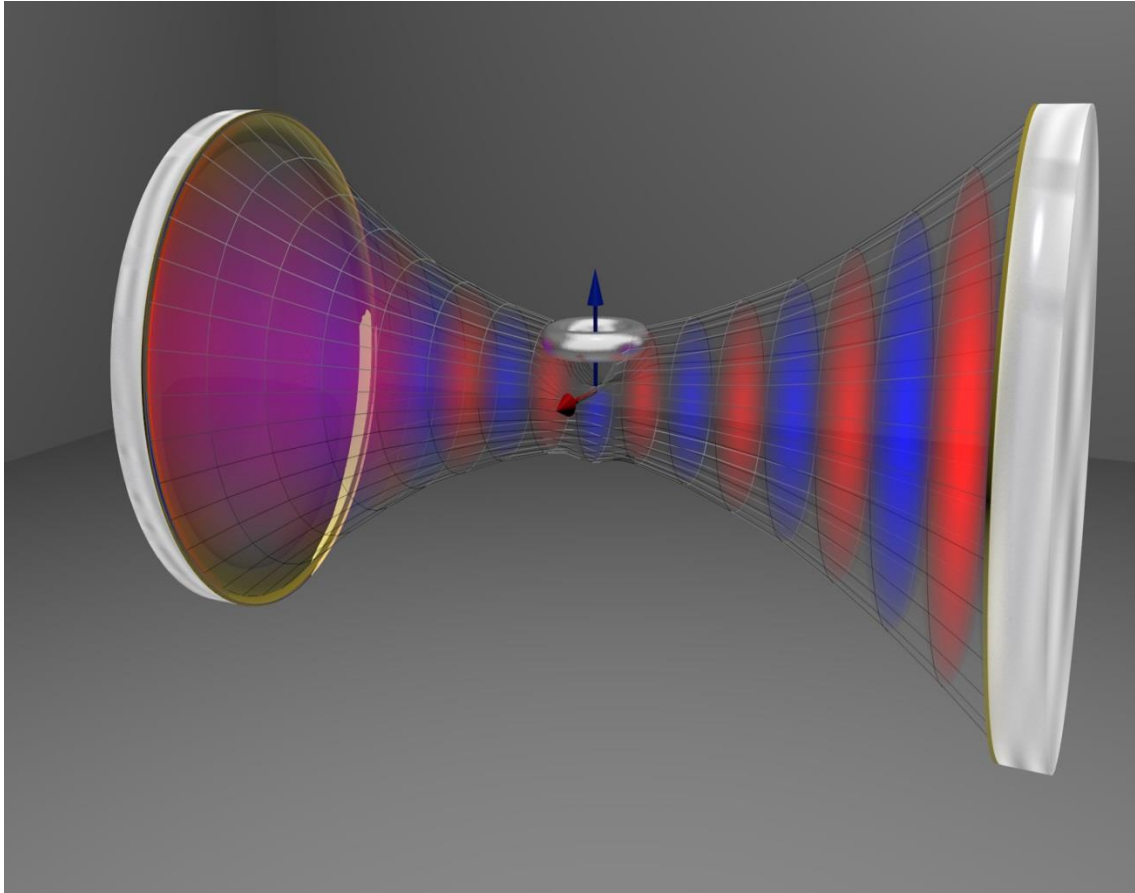
# RADIOWAVE TOMOGRAPHY OF HIDDEN OBJECTS

professor of Radiophysics department

Vladimir Yakubov

e-mail: [yvlp@mail.tsu.ru](mailto:yvlp@mail.tsu.ru)

# Introduction

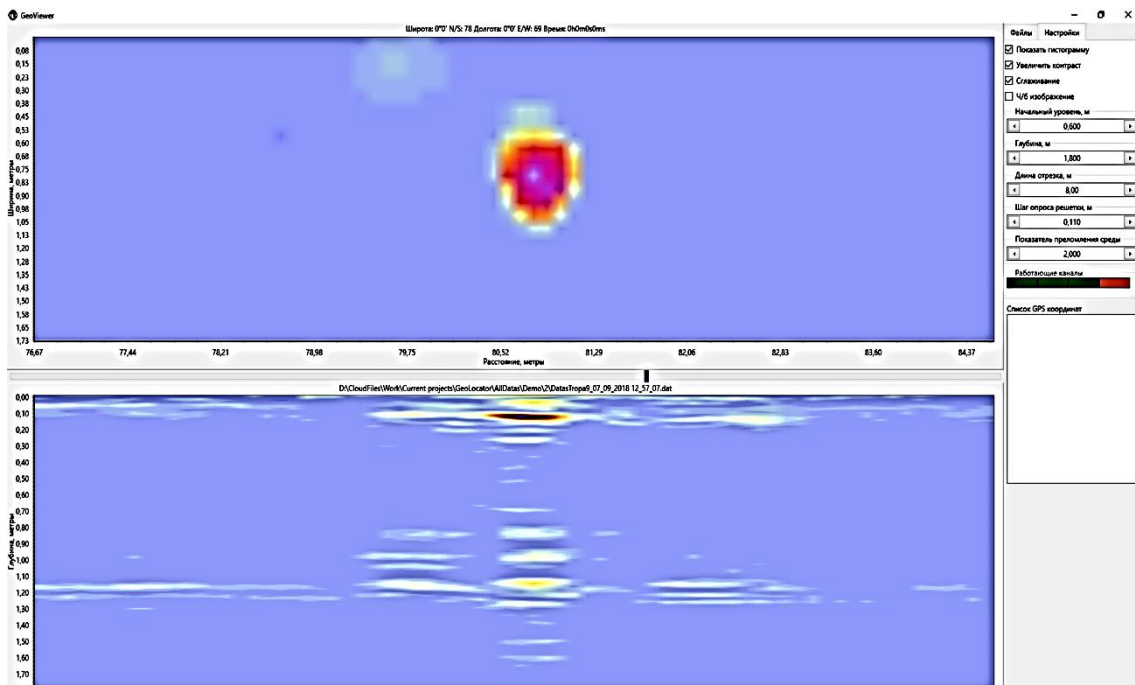
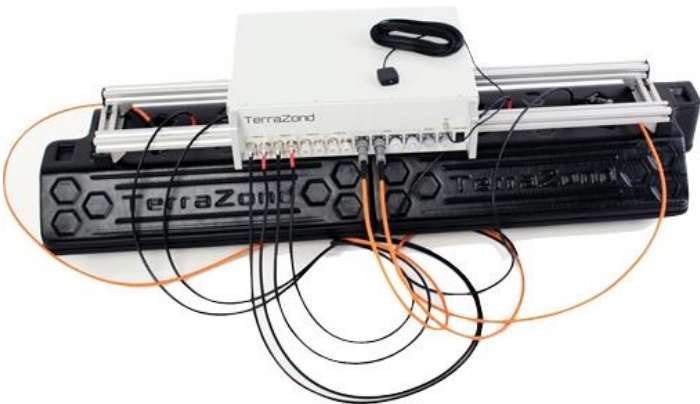


- Technology:  
Radiowave focusing on the point of space
- Advantages :  
real-time radio image acquisition  
high resolution radio tomography image
- Result:  
Several devices for different purposes
- Use for:  
3D visualization of hidden objects

# Applications

- Quality control of a road surface:
  - Radiowave multichannel geolocator for road «**TerraZond**»
  - 3D radio tomograph for engineer communications «**3D RadioScan**»
- Security:
  - TWR radar for detecting humans through barriers «**Radar Dozor**»
  - Compact multichannel geolocator «**MiniGeoScan**»
  - Portal for detecting of prohibited Items
- Measurement of material parameters:
  - Measurer of electro-physical parameters for flat objects «**WaveCube**»
  - Radiowave mammography «**WaveScan**»

# GEORADIOTOMOGRAPH



Use for:  
operational examination of the roadways without invasion.

Advantages:  
working with road width up to 2,4 meters;  
speed up to 80 km/h.

Characteristics :  
probing deep 2 m;  
resolution 5 cm

# 3D RadioScan



## Use for:

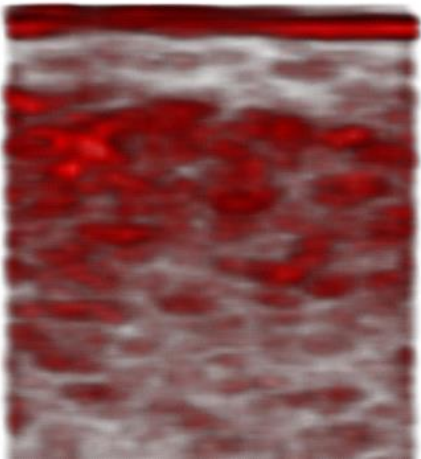
Detection and visualization of optical cables, plastic and metal tubes, voids under ground, into blocks and concrete walls, road layers

## Advantages:

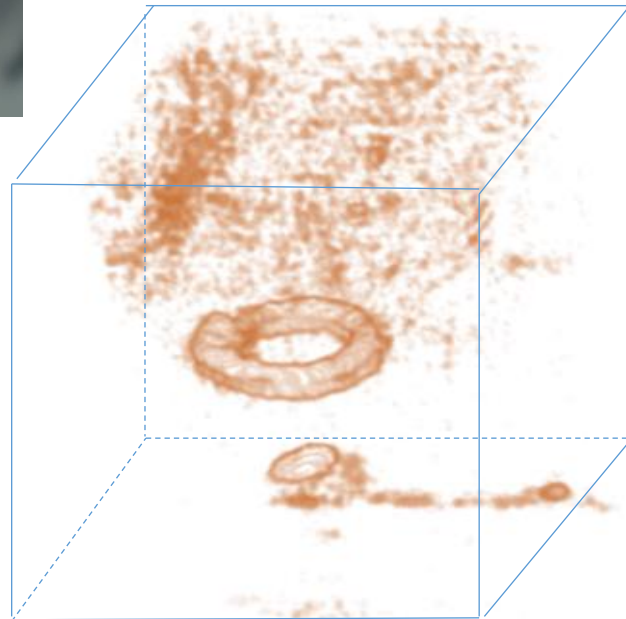
Mobility;  
High resolution .

## Characteristics :

probing deep 1 m;  
resolution 1 cm;  
working area 0,7×0,7 m.



2D visualization



3D visualization

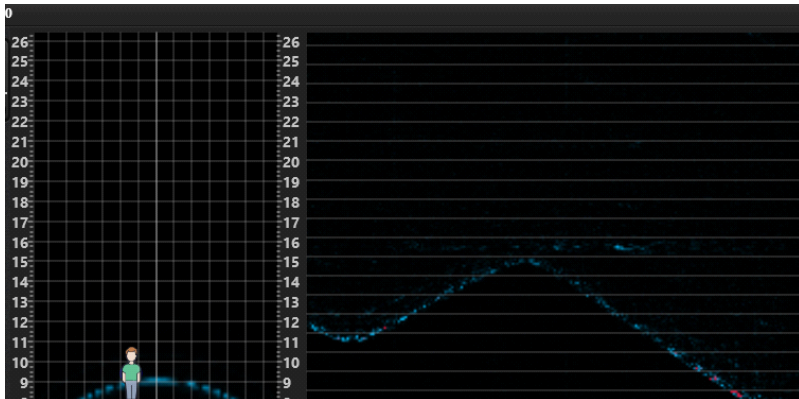
# RADAR DOZOR 400



Use for:  
detecting moving or motionless humans behind barriers.

Advantages:  
scanning through block and reinforcement walls;  
scanning multilayered building constructions;  
scanning through a snow or smoke.

Characteristics :  
range 25 m;  
real-time processing 10 fps.



# MiniGeoScan

## Use for:

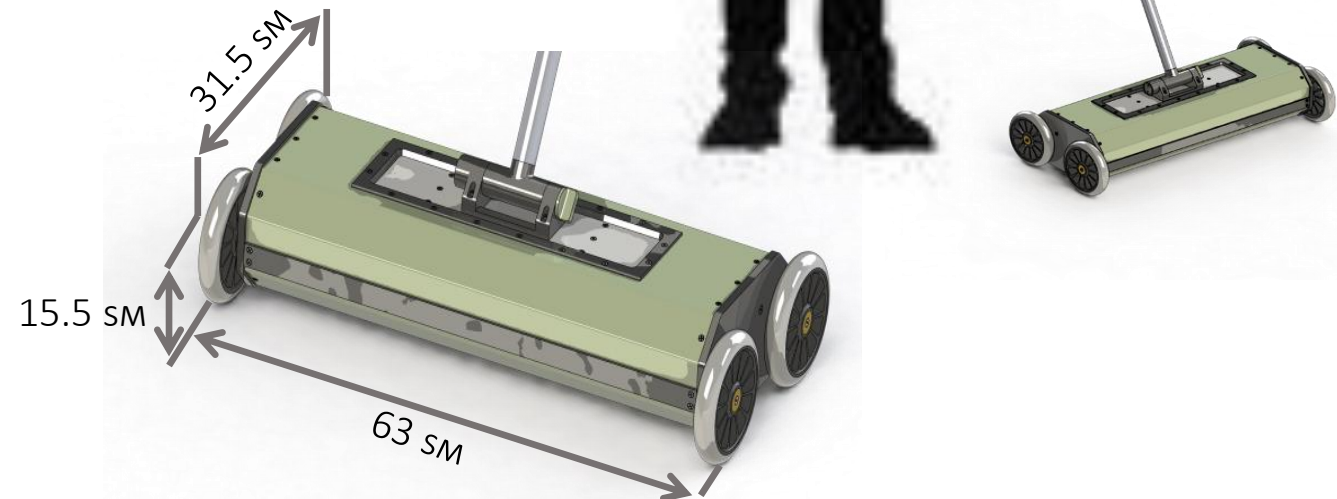
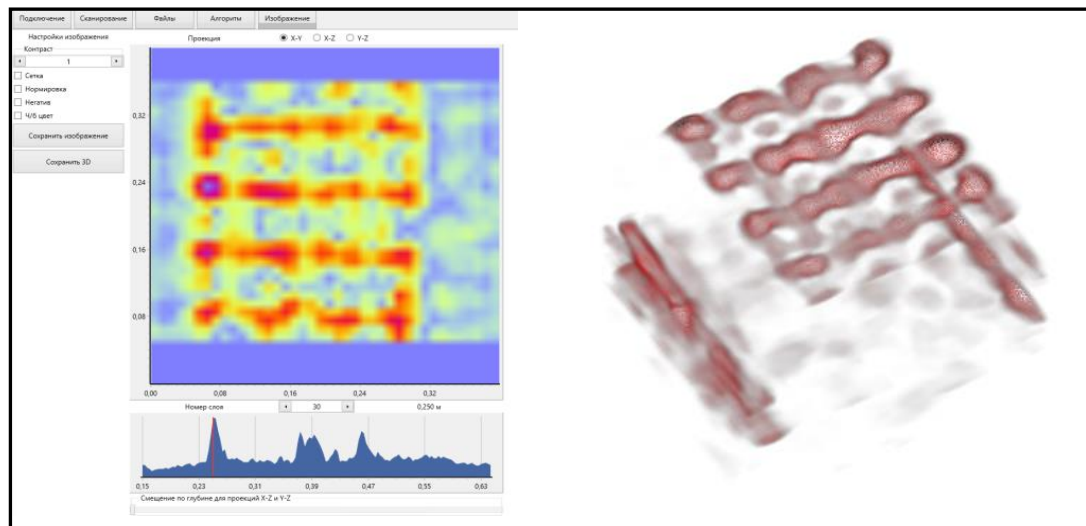
Detection and visualization of hidden metallic and dielectric objects under ground

## Advantages:

- Mobile and ergonomic construction;
- Scanning of surface types (a floor, walls, a ceiling, road layers);
- Real-time visualization on a remote screen.

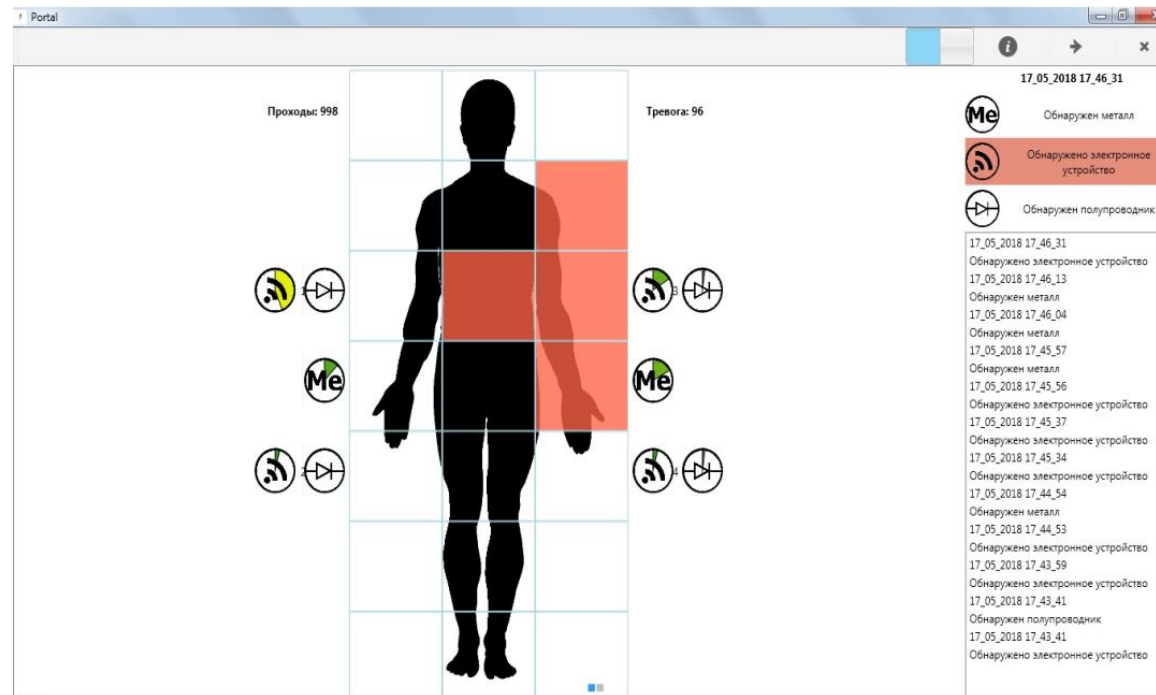
## Characteristics :

- Frequency band of sounding signal: 1.5 – 8 GHz;
- Penetration depth: 1 m;
- Resolution: 2 cm;
- Width of 16 elements antenna array;
- Scanning speed: 0,1 m/sec



# Portal for detecting of prohibited Items

- **1. System for detection of radio-electronic devices**
  - Detection of hidden electronic devices - cell phones, fuze, transmitters, video cameras, listening devices
  - Detection of damaging elements in the form of a large number of bolts,, cut rebars, etc., which enhance damaging effect of the explosion of suicide belts
- **2. System for detection of all classes metallic objects**
  - Detection ferrous metals
  - Detection non-ferrous metals
- **3. Software**
  - Processing
  - Analysis
  - Visualization
  - Archiving





# WaveCube



## Use for:

High-speed measurement of complex reflection and transmission coefficients, dielectric and magnetic permeability coefficients of flat absorbers and dielectrics.

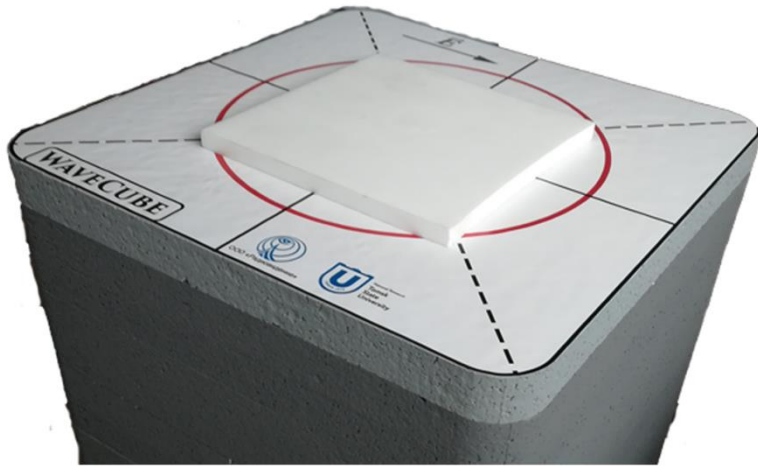
## Advantages:

- Wideband measurement;
- Real-time processing;
- Measurements not require no anechoic chamber.

## Characteristics:

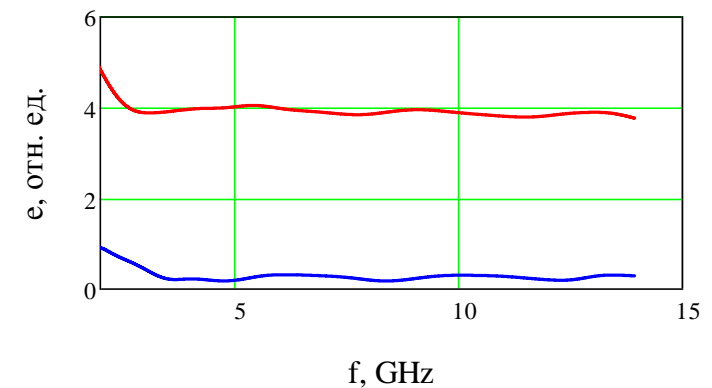
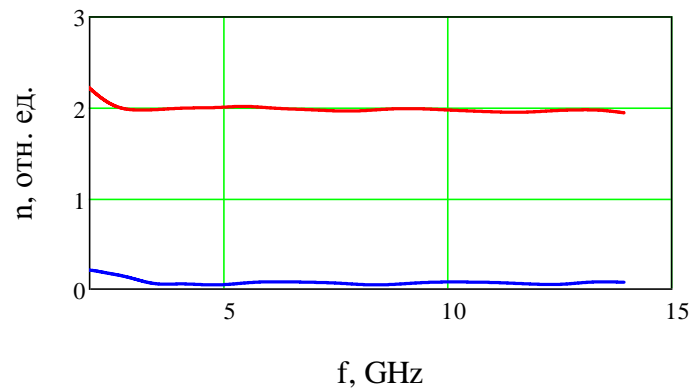
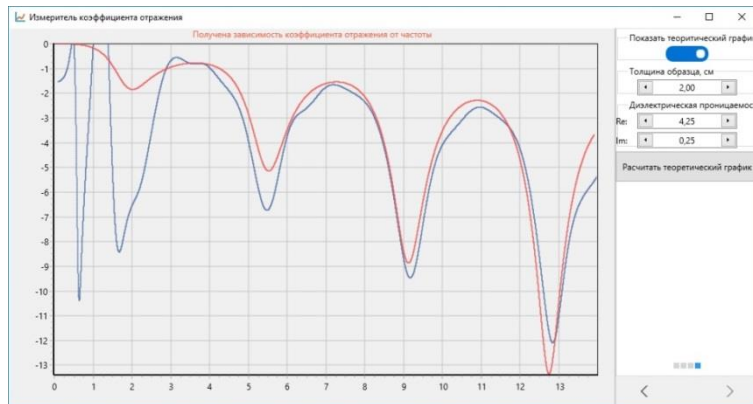
- Wideband: 1.5 – 18 GHz;
- Dynamical range of measurements: not less 94 dB;
- Size: height 70 cm, width 60 cm, length 60 cm;
- Linear size of object under research: not less 15 cm.

# WaveCube



## Software:

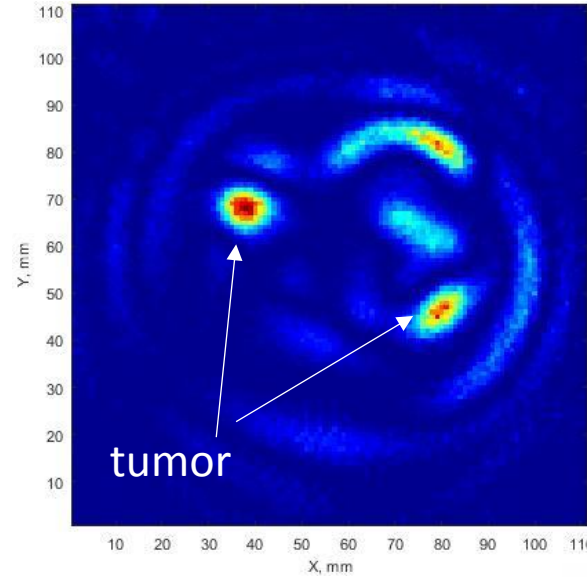
- High-speed processing of object's complex parameters
- Presentation and storage of measurement data and comments on them;
- Analysis of data after series of measurements;
- Calculate theoretical reflection and transmittance coefficients for verification of measurement methods;
- data export in XLS, ASCII, JPG, BMP.



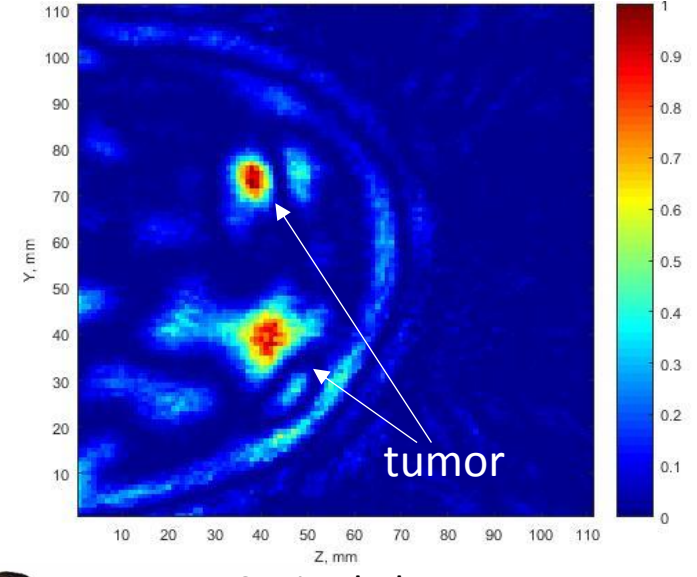
# Radiowave mammography



Components and construction of a complex breast imaging phantom

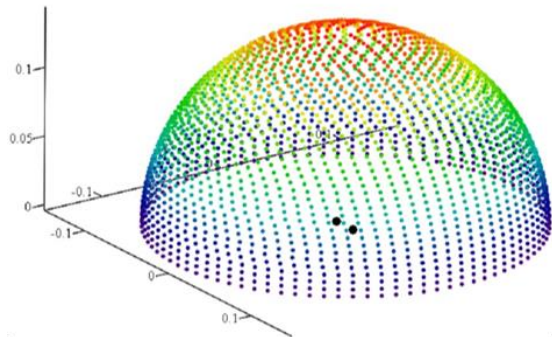


Coronal plane

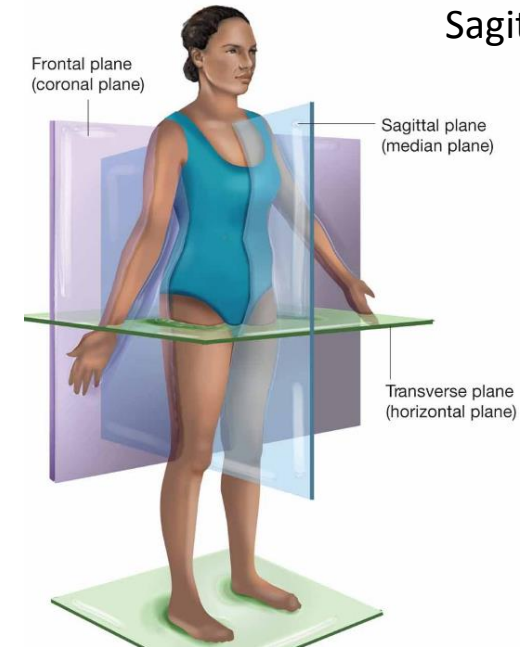


Sagittal plane

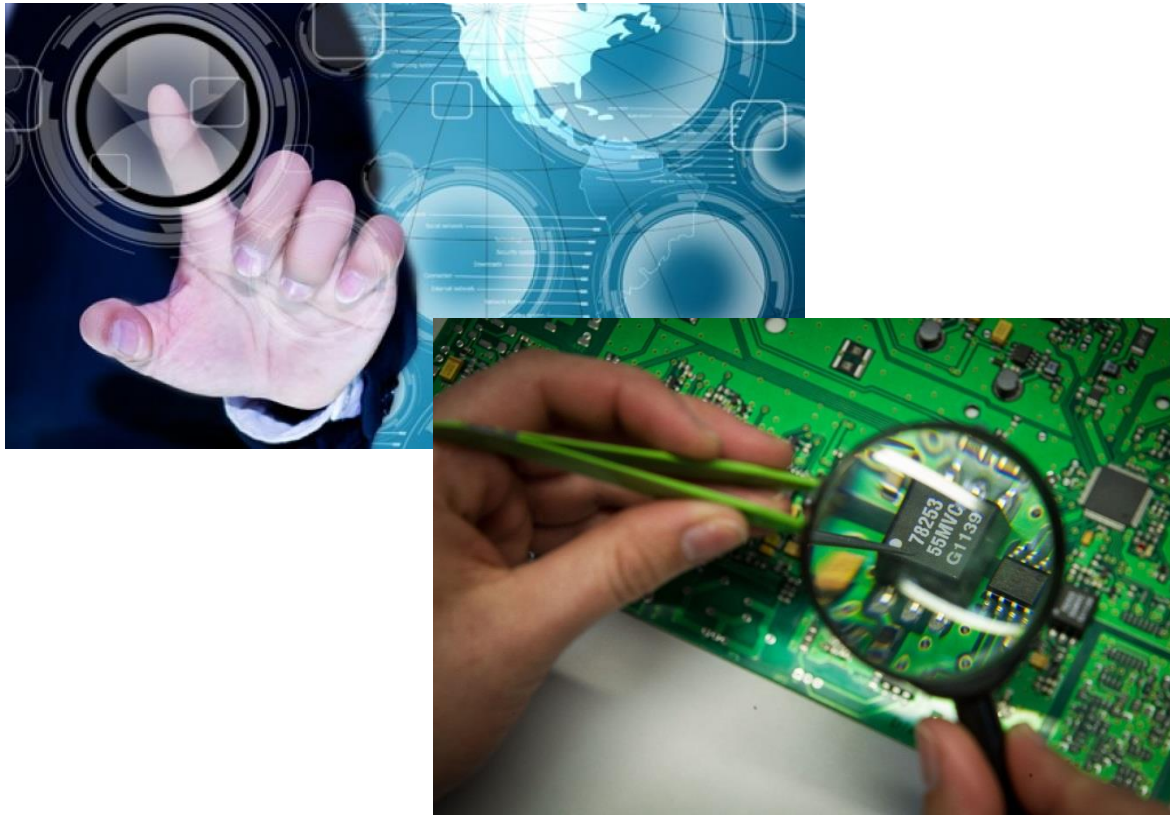
1194 points of scan



Experiments with the female breast imaging phantom



# R & D



## Use for:

developing of prototypes according to the terms of reference;  
developing of software for control and data processing.

## Advantages:

high qualified team;  
experience;  
full cycle (from modeling to producing).